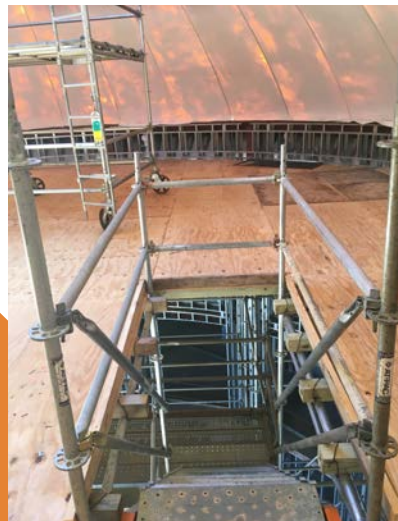




"Dance Floors"



FOR ELEVATED, LARGE AREA ACCESS

**safe,
skilled,
& local.**

**SPECIALIZING IN ACCESS
SOLUTIONS AT ANY LEVEL**

Since 2001, our mission has been to be an indispensable partner with our customers. Diverse equipment, multiple branch locations, and skilled employees enables us to design and execute safe access solutions for the most complex project.



COMMERCIAL / INDUSTRIAL DANCE FLOORS

These large elevated platforms provide safe access for multiple trades to work at the same time on a smooth surface. Dance floors greatly increase efficiency for workers since they can cover large areas at one time. You can integrate stairs, rolling towers, material hoists, and trash chutes into the dance floor which can be designed with heavy duty load ratings in areas for material / equipment storage.



SERVICE OFFERINGS

- Skilled / Certified / Labor - Erection and Dismantle
- Equipment Rental & Sales
- Design / Layout
- User / Erector / Competent Person Training